

Lab 9 – Navigation

Objective

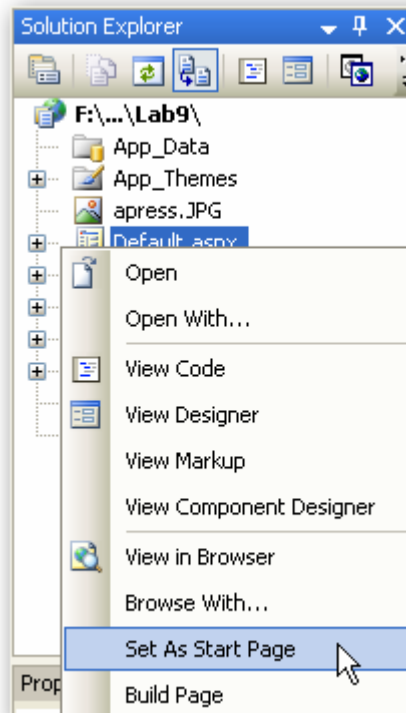
In this lab, you will enhance the web site built in Lab 8. You will add 3 more pages to the web site and then add navigation using a web site map and a *TreeView* control.

Step-by-Step Instructions

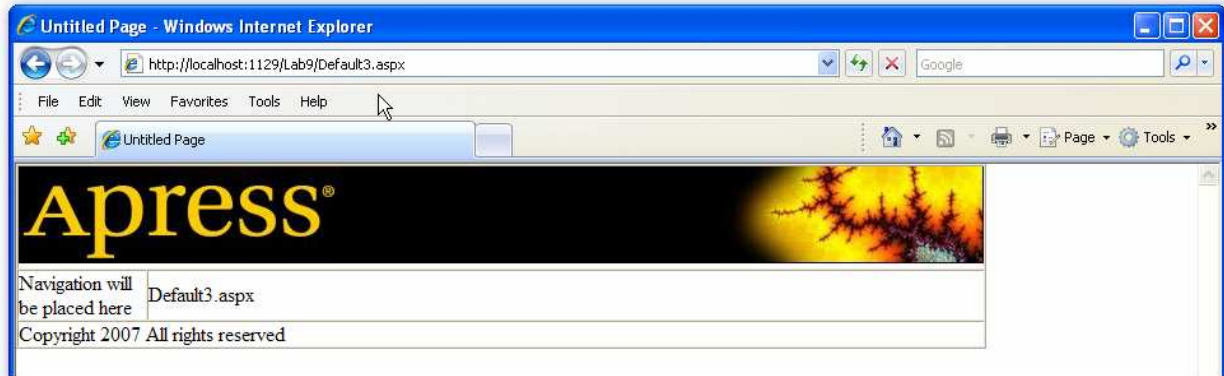
1. Start Visual Studio 2005
2. Open the web site from the previous lab. **File → Open Web Site → c:\code\Lab8**
3. In order to make navigation useful, there must be multiple pages within your web site. Right click on the *MasterPage.master* file and select **Add Content Page**. *Default2.aspx* will be created. In the content area of *Default2.aspx*, add a label and change the *Text* property to “*Default2.aspx*”.

```
<%@ Page Language="VB" MasterPageFile="~/MasterPage.master" AutoEventWireup="false"
CodeFile="Default2.aspx.vb" Inherits="Default2" title="Untitled Page" %>
<asp:Content ID="Content1" ContentPlaceHolderID="ContentPlaceHolder2" Runat="Server">
  <asp:Label ID="Label1" runat="server" Text="Default2.aspx"></asp:Label>
</asp:Content>
```

4. Repeat step 3 above two times to create [files](#) *Default3.aspx* and *Default4.aspx*. Make sure the text of each label control matches the name of the file. This will be useful to know that the page is changing when the navigation is tested later in the lab.
5. Right-click on **Default.aspx** in the Solution Explorer and choose **Set As Startup Page**

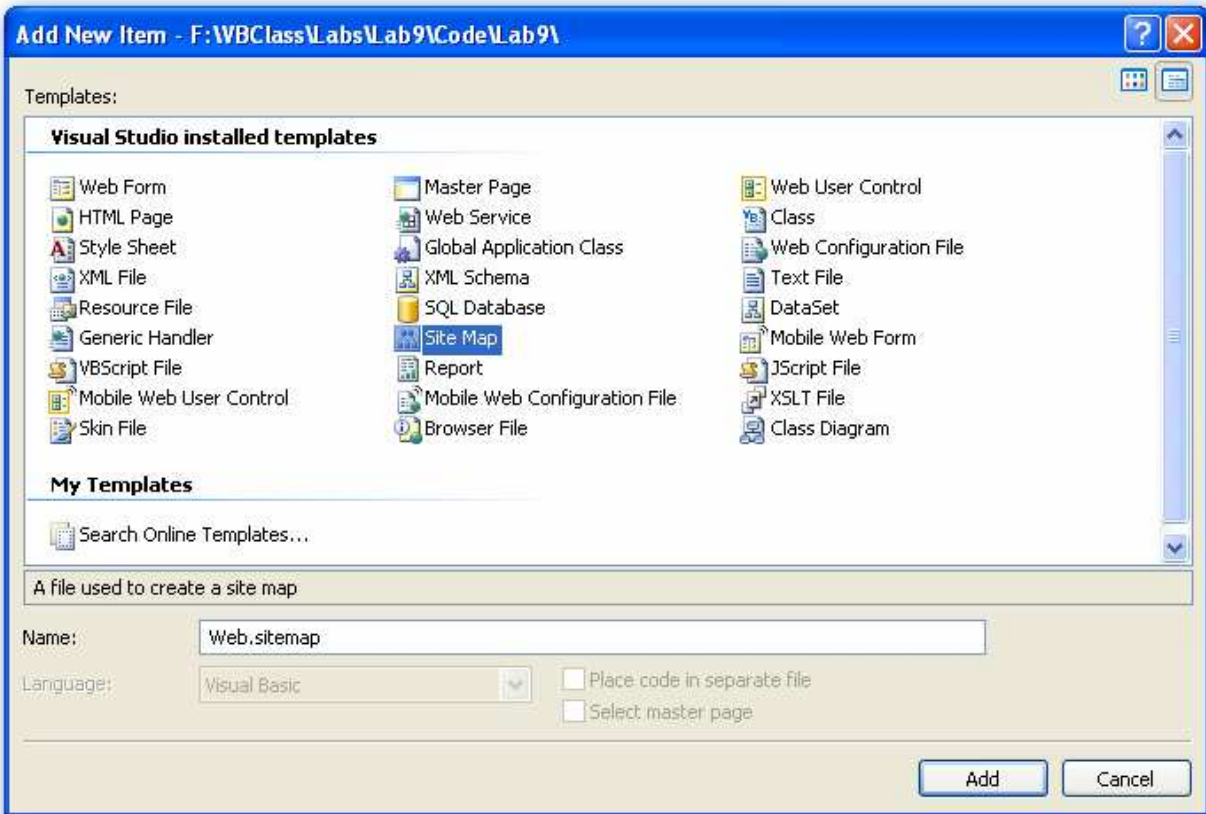


6. Run the application. Notice that the only way to navigate between pages is by changing the URL in the browser. Experiment with changing the URL in the browser to different pages (either *Default2.aspx*, *Default3.aspx*, or *Default4.aspx*) by modifying the URL as shown below:

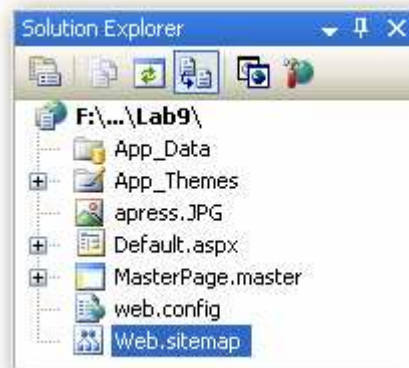


7. To make navigating the site easier, you will now add a sitemap and [TreeView](#) to the page. Select **Add New Item...** from the **Website** menu. Add the Site Map according to the settings below:

Setting	Value
Visual Studio installed templates	Site Map
Name	Web.sitemap



8. Click **Add** to add the sitemap to the page.



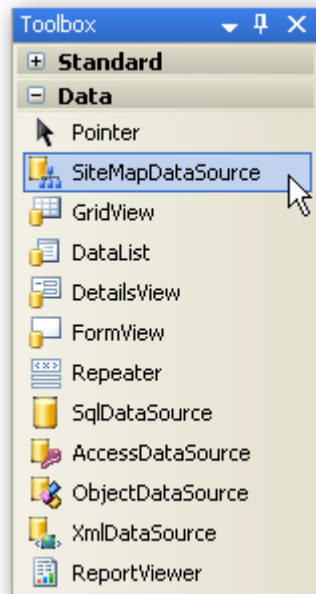
9. The *Web.sitemap* page is now created with the default template.

```
<?xml version="1.0" encoding="utf-8" ?>
<siteMap xmlns="http://schemas.microsoft.com/AspNet/SiteMap-File-1.0" >
  <siteMapNode url="" title="" description="">
    <siteMapNode url="" title="" description="" />
    <siteMapNode url="" title="" description="" />
  </siteMapNode>
</siteMap>
```

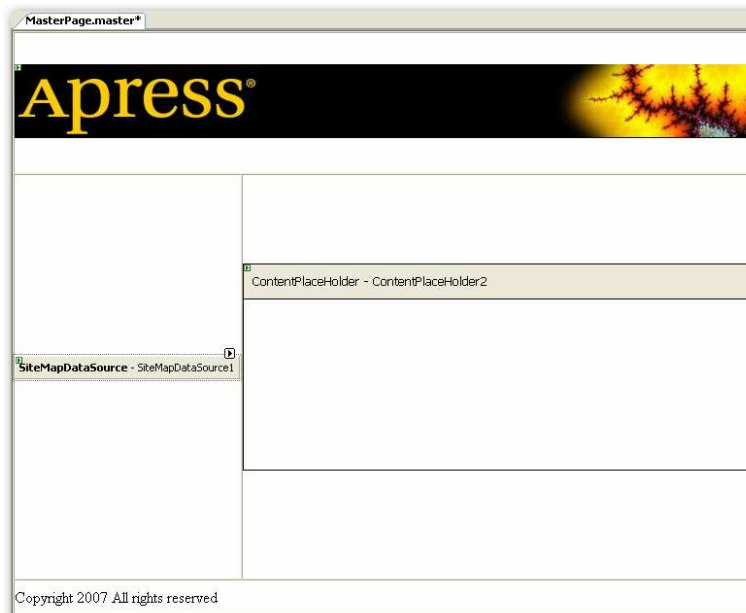
- Alter the *Web.sitemap* file as shown below. This will create a simple hierarchy between the Home page (*Default.aspx*) and the other pages on the site. This is done by creating the 3 *siteMapNodes* within the main *siteMapNode*.

```
<?xml version="1.0" encoding="utf-8" ?>
<siteMap xmlns="http://schemas.microsoft.com/AspNet/SiteMap-File-1.0" >
  <siteMapNode url="Default.aspx" title="Home" description="Home">
    <siteMapNode url="Default2.aspx" title="Default2" description="Default2" />
    <siteMapNode url="Default3.aspx" title="Default3" description="Default3" />
    <siteMapNode url="Default4.aspx" title="Default4" description="Default4" />
  </siteMapNode>
</siteMap>
```

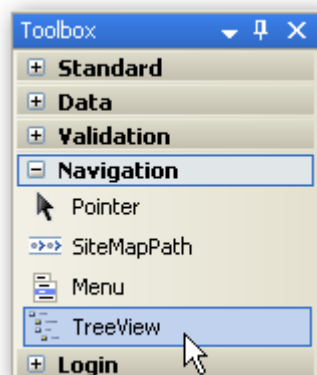
- Save and close the *Web.sitemap* file.
- Open *MasterPage.master* in **Design** mode.
- Highlight and remove the text “*Navigation will be placed here*” in the navigation area of the page. This text will no longer be needed.
- Open the **Data** section of the Toolbox and locate the **SiteMapDataSource** control.



15. Drag this control onto the Master page and place it in the left navigation area.



16. Open the **Navigation** area of the Toolbox and locate the **TreeView** control.



17. Drag the *TreeView* control on to the Master Page into the navigation area directly under the *SiteMapDataSource*.

18. Edit the Data Source property on the TreeView control and set it to “*SiteMapDataSource1*” as shown below. This will now link the *TreeView* control to the proper data source (sitemap).



19. Run the application.
20. Expand and collapse the **Home** menu item in the **TreeView** navigation control. Also, click on the links to experiment changing pages within the web site.

