

# Lab 19 – Terraservice

## Objective

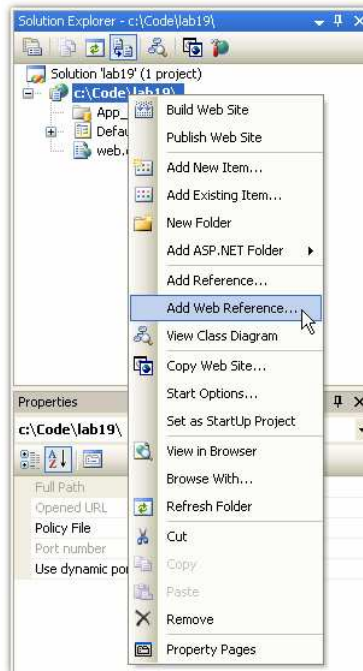
You will create a simple web application that will call a web service located on the Internet. The *Terraservice* web service is a publicly accessible web service that can be used by any SOAP-compatible web service.

## Step-by-Step Instructions

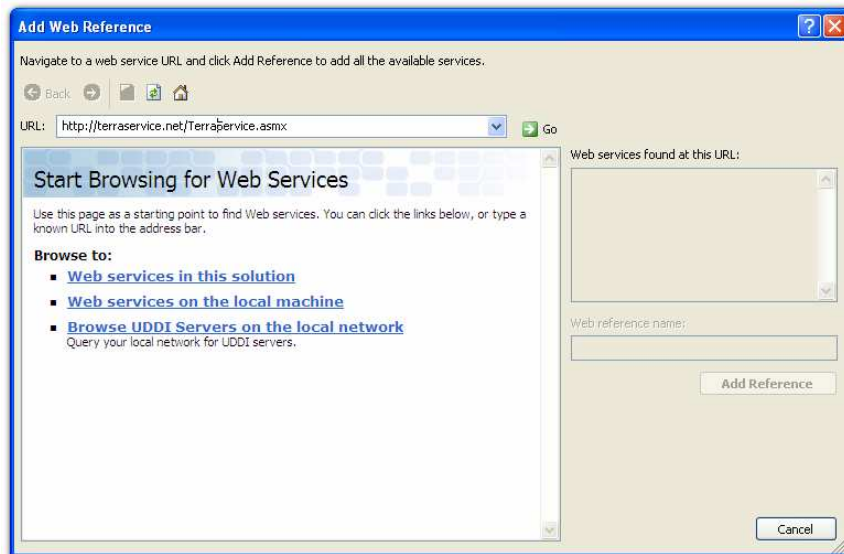
1. Start Visual Studio 2005
2. Create a blank solution file. **File** → **New** → **Web Site**
3. Select the following options:

Setting	Value
Visual Studio installed templates	ASP.NET Web Site
Location	File System – C:\Code\Lab19
Language	Visual Basic

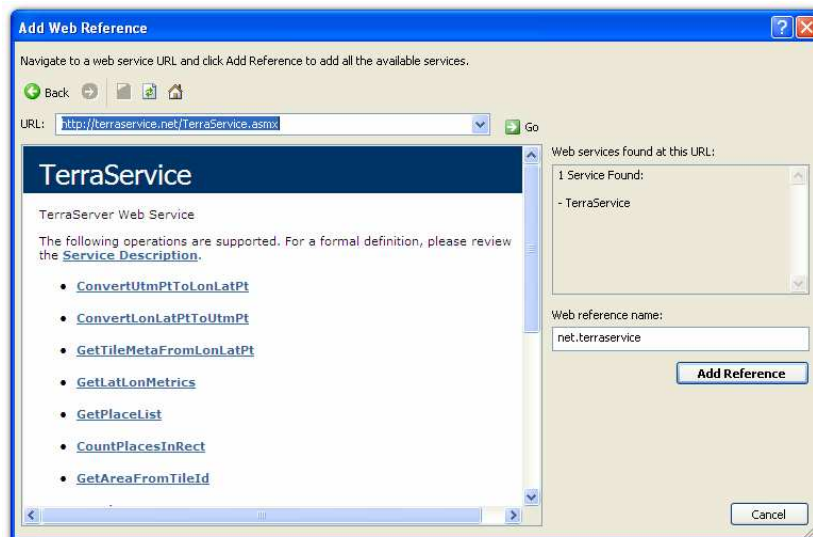
4. Right-click on the project in Solution Explorer and choose **Add Web Reference**



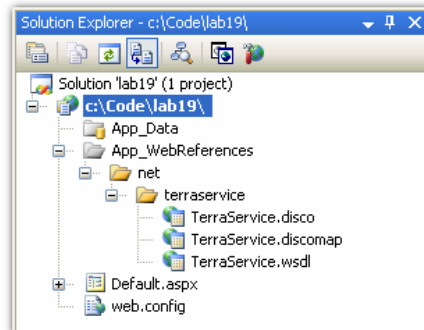
5. Type the following URL in the box: “<http://terrasservice.net/TerraService.asmx>” as shown below:



6. Click the **Go** button to access the *TerraService* web site.



7. Change the Web reference name to TerraService and then click on **Add Reference** to add the *TerraService* web reference to your web project. The Solutions Explorer should now look similar to the one below.



8. Create the *Page\_Load* event for *Default.aspx*.
9. Add the following code to the *Page\_Load* event:

```
Partial Class _Default
    Inherits System.Web.UI.Page

    Private ts As New net.terraservice.TerraService()

    Protected Sub Page_Load(ByVal sender As Object, ByVal e As System.EventArgs) Handles Me.Load
        Dim searchPlace As New net.terraservice.Place()
        searchPlace.City = "Philadelphia"
        searchPlace.State = "Pennsylvania"
        searchPlace.Country = "US"

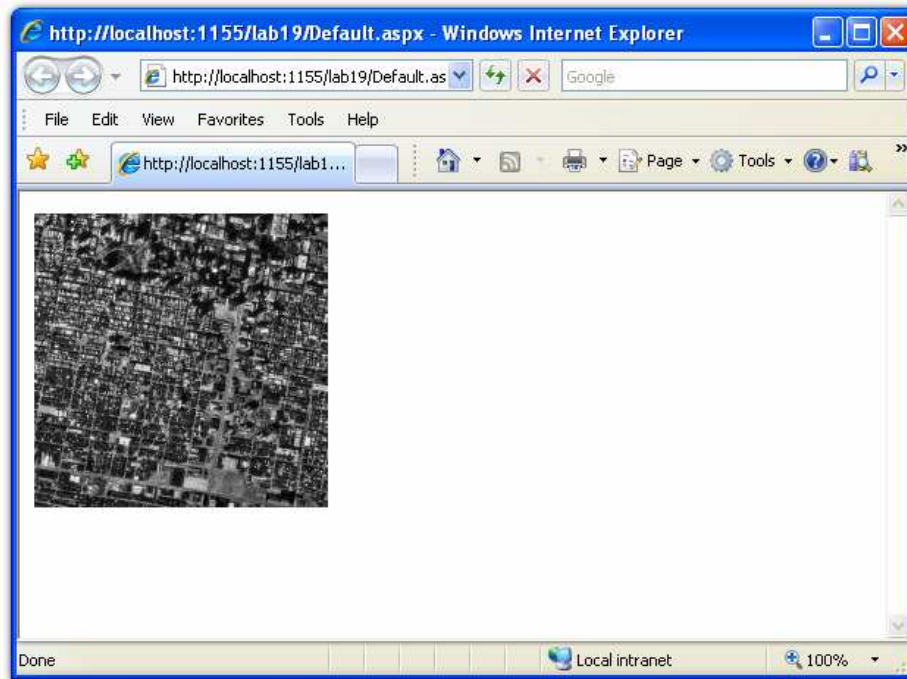
        Dim facts As net.terraservice.PlaceFacts
        facts = ts.GetPlaceFacts(searchPlace)

        Dim tileData As net.terraservice.TileMeta
        tileData = ts.GetTileMetaFromLonLatPt(facts.Center, _
            net.terraservice.Theme.Photo, net.terraservice.Scale.Scale8m)

        Dim image() As Byte = ts.GetTile(tileData.Id)

        Response.BinaryWrite(image)
    End Sub
End Class
```

10. Run the application. The image should now show in your browser as shown below:



11. Experiment with different locations on your own.